

Item: 10A
Date: 5/7/26

Port of Tacoma Harbor Transportation Update

Ryan Medlen

Senior Planner

Port of Tacoma Commission Meeting

Date: May 7, 2026



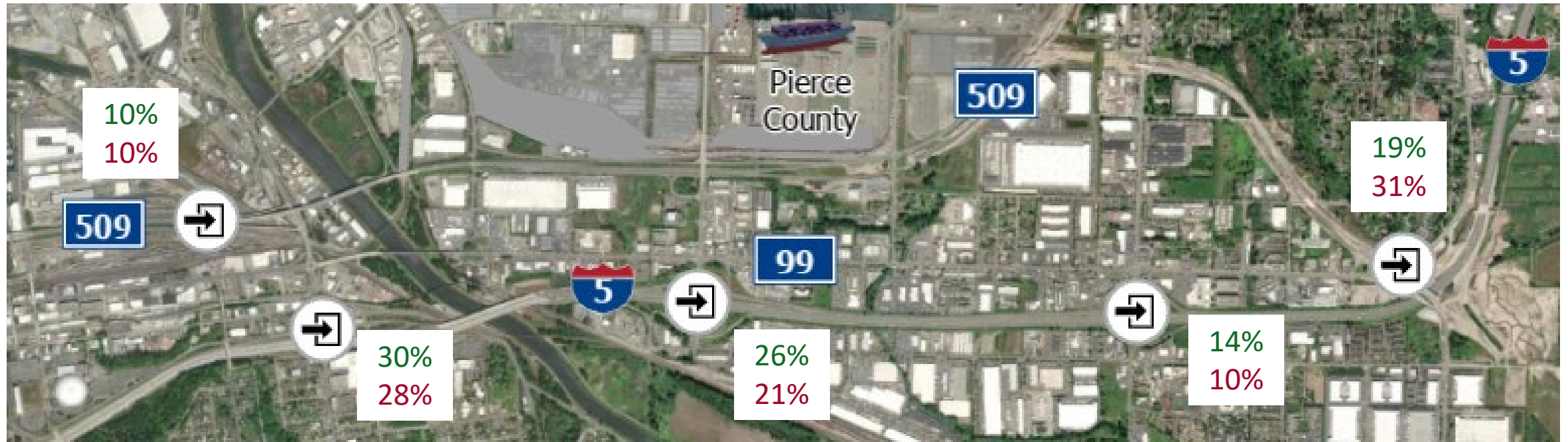
TA 1 Support bridge and road projects that improve freight mobility and travel time reliability, prioritizing the SR 167 Gateway Project, the Port of Tacoma Road/I-5 interchange, Fishing Wars Memorial Bridge reopening, Portland Avenue corridor and Taylor Way/54th Avenue intersection projects.

TA 2 Advocate for the transportation infrastructure, system management, and advanced clean energy needs of Port-related businesses in the Tideflats and Pierce County.

TA 3 Support strategic rail investments and rail projects throughout the Tideflats.

TA 4 Be a resource for freight mobility expertise and knowledge for transportation projects and programs that support Port-related activities.

Port Truck Distribution

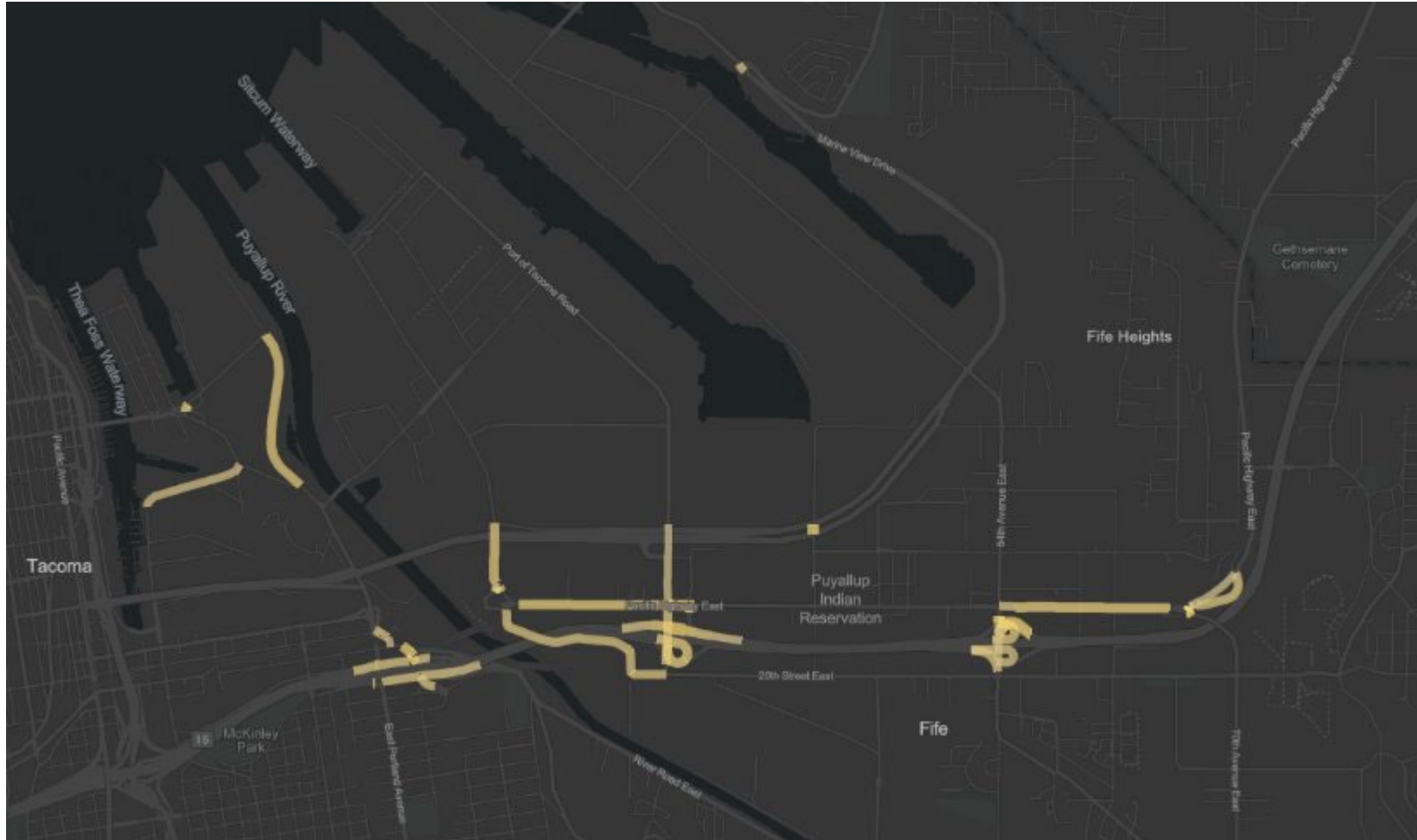


Green is inbound truck traffic.

Red is outbound truck traffic.

Note: These numbers are different than the memorandum maps due to consolidation.

Congested – January to March 2025



Yellow indicates road segments congested more than 50% of the time. Data used is for weekdays from 7am – 2pm in January, February, March of 2025.

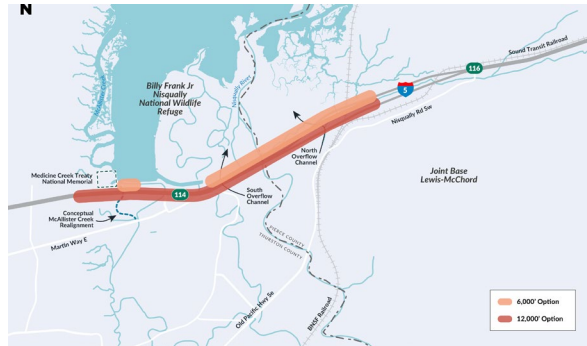
Key points of congestion for heavy duty trucks align with 4 of the harbor access points:

- I-5 interchanges at 54th, Port of Tacoma Rd, and Portland Ave
- Wapato Way roundabout

Port of Tacoma Strategic Projects

Project	Supports a key harbor access point?	Addresses an area of congestion?	Status
SR 167 Completion	Yes	Yes	Under construction
Port of Tacoma Road / I-5 interchange	Yes	Yes	Advancing to construction
Fishing Wars Memorial Bridge	Yes	Yes	30% design in process
Milwaukee Way / Pacific Hwy intersection	No	Yes	Advancing with the Fishing Wars Memorial Bridge
Taylor Way / 54th Avenue intersection	No	Yes, during off-peak drayage hours	Funded for design
Portland Ave Corridor	Yes	Yes	Partially advancing

Projects to Watch



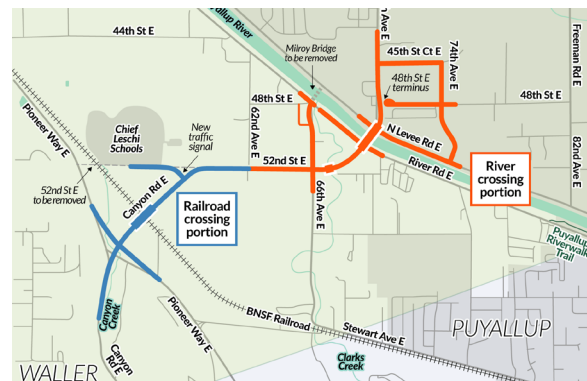
I-5 Marvin Rd to Mounts Rd
(WSDOT)



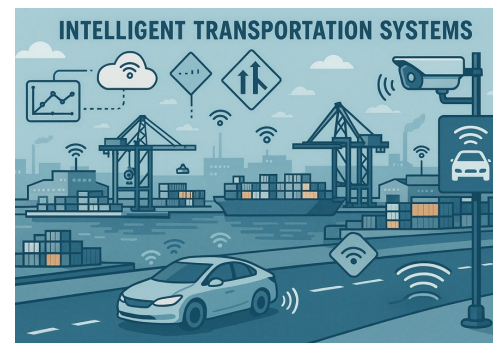
Maintenance



54th Ave Interchange
(City of Fife)



Canyon Rd Extension
(Pierce County)



Intelligent Transportation Systems
upgrades
(City of Tacoma)



Wapato Way extension from
Pacific Hwy to 8th St
(City of Fife)

- **Current priority projects are a benefit** to key points of harbor access and congestion. No changes to the list are proposed at this time.
- All port **priority projects are advancing**.
- As projects come online, staff will **continue to monitor changes in traffic patterns** and needs.
- Agency partners **continue to plan future projects** to address known and expected needs in the harbor area transportation system.
- As needs change or opportunities arise, **staff will regularly engage the Executive and Commission** on recommended updates to the list of priority projects.



Thank You

Questions & Discussion



Ryan Medlen
Senior Planner
rmedlen@nwseaportalliance.com